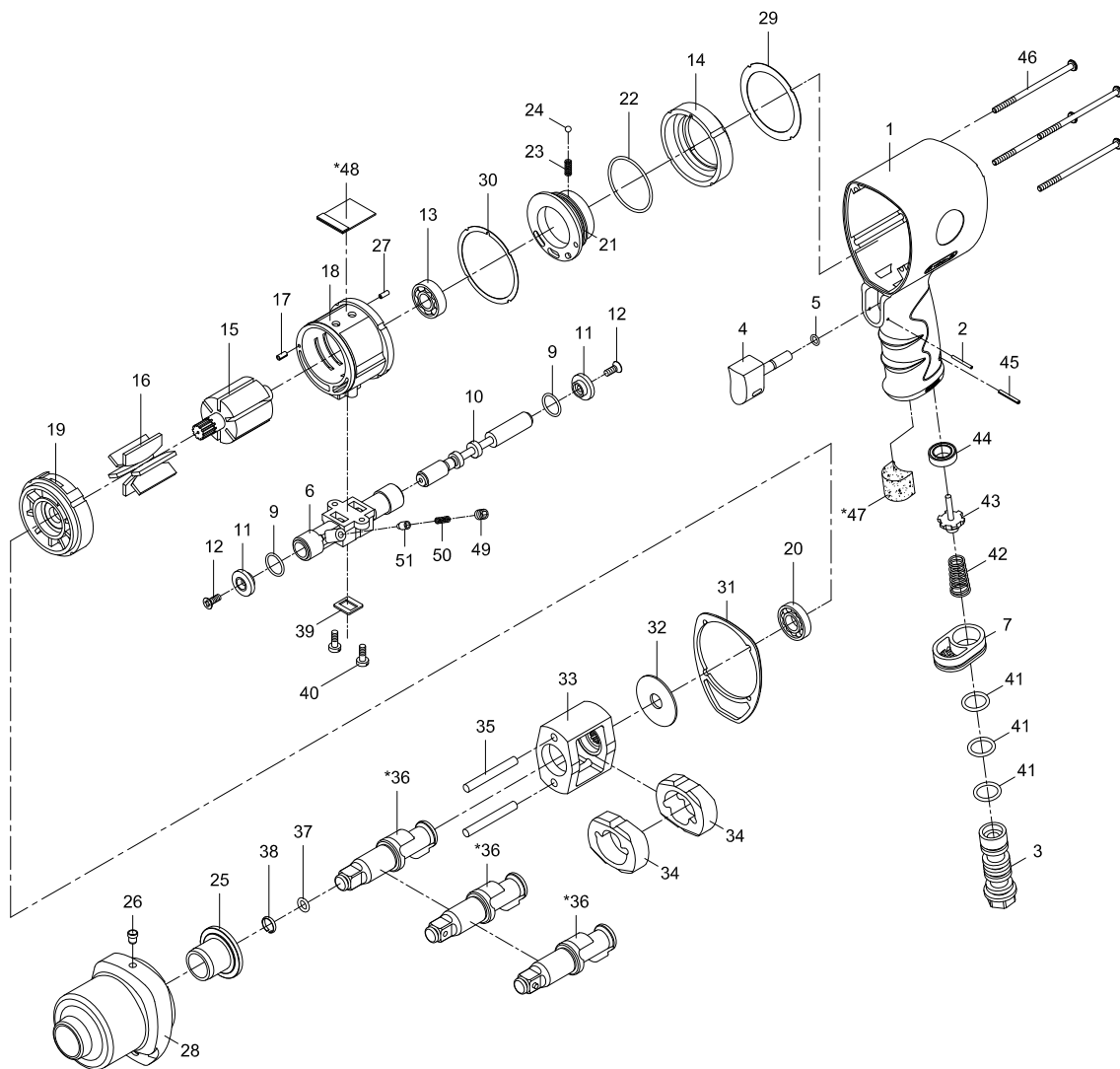


# 1/2" PROFESSIONAL IMPACT WRENCH



Index No.	Parts No.	Description	Index No.	Parts No.	Description
1	43-4033P01	Motor Housing	28	43-403328	Hammer Case
2	62054	Spring Pin (2x20)	29	43-403334	Gasket
3	43-401203	Air Inlet	30	43-403336	Gasket
4	43-403204	Trigger	31	43-403335	Gasket
5	OR00400100	O-Ring (4x1)	32	43-403327	Washer
6	43-403306	Reverse Valve	33	43-403308	Hammer Cage
7	41-401207	Exhaust Diffuser	34	43-403111	Hammer (2)
9	OR01104103	O-Ring (2) (11.4x1.25)	35	43-403117	Hammer Pin (2)
10	43-403310	Reverse Stem Текст		43-403102-11	Anvil (R-Type 1/2")
11	41-401229	Button (2)	*36	43-403102-12	Anvil (RH-Type 1/2")
12	61035	Screw (2) (M3x8)		43-403102-13	Anvil (M-Type 1/2")
13	040313	Ball Bearing (6001)	37	40305	O-Ring (6.5x2)
14	43-403349	Fixed Ring	38	40303	Retaining Ring
15	43-403315	Rotor	39	41-401237	Gasket
16	43-403316	Rotor Blade (6)	40	41-401250	Screw (2)
17	70117-13	Spring Pin (2.5x5)	41	OR01505206	O-Ring (3) (15.54x2.62)
18	43-403318	Cylinder	42	43-403147	Valve Spring
19	43-403319	Front End Plate	43	43-403148	Valve Stem
20	072021	Ball Bearing (EE4)	44	43-403145	Rubber Spacer
21	43-403320	Air Regulator	45	70102	Spring Pin (2.5x20)
22	OR03805200	O-Ring (38.5x2)	46	43-403330	Screw (4) (M4x90)
23	43-403323	Spring	*47	75-725153	Muffler Material
24	5K-3011B25	Steel Ball (9/64")	*48	43-403351	Muffler Material
25	43-403325	Anvil Bushing	49	41-401243	Set Screw (M4x6)
26	41-401254	Oil Cap (1/8")	50	43-403341	Spring
27	70117	Spring Pin (2x5)	51	43-403342	Pin

\* Optional Parts

43-4033P-0001